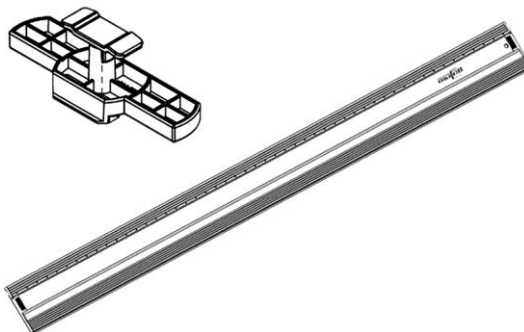
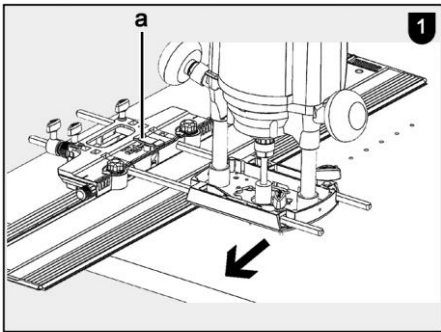
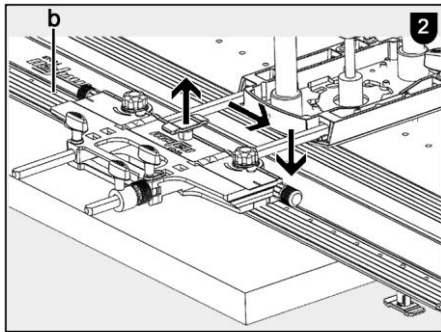


de	Kurzanleitung	Führungsschienen F 80-LR und F 160-LR	3
en	Quick reference guide	Guide rails F 80-LR and F 160-LR	4
fr	Guide rapide	Rails de guidage F 80-LR et F 160-LR	5
it	Brevi istruzioni	Barre guida F 80-LR e F 160-LR	6
nl	Korte handleiding	Geleidingsrails F 80-LR en F 160-LR	8
es	Instrucciones breves	Carriles guía F 80-LR y F 160-LR	9
fi	Pikaohje	Ohjaukskot F 80-LR ja F 160-LR	10
sv	Kortbeskrivning	Styrskenor F 80-LR och F 160-LR	12
da	Kort vejledning	Styreskiner F 80-LR og F 160-LR	13
ru	Краткое руководство	Направляющие F 80-LR и F 160-LR	14
pl	Skrócona instrukcja obsługi	Szyny prowadzące F 80-LR i F 160-LR	16
cs	Stručný návod	Vodící kolejnice F 80-LR a F 160-LR	17
sl	Vodnik za hitri začetek	Vodilne tirnici F 80-LR in F 160-LR	18
sk	Krátky návod	Vodiace lišty F 80-LR a F 160-LR	19

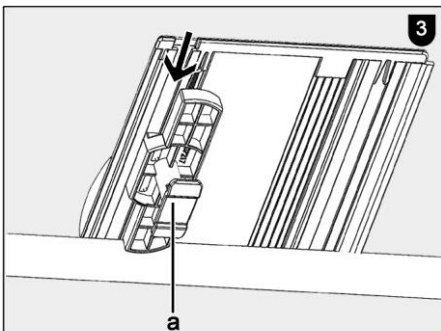




MAF02376/a



MAF02377/a



MAF02378/a



Der Zirkelpin (a) kann in Parkposition gestellt werden. Dazu Zirkelpin nach oben ziehen, parallel zu Grundkörper des Oberfräsadapters LO-FA drehen und Zirkelpin wieder loslassen.

4 Verwendung des Lochreihenanschlags (Abb. 3)

- Lochreihenanschlag in Führungsschiene einschieben.
- Zirkelpin (a) zum Entriegeln drehen.
- Zirkelpin rastet selbsttätig in Lochreihe der Führungsschiene ein. Der Abstand Werkstückkante/erstes Bohrloch beträgt 9,5 mm (mittig für eine 19 mm Seite).

English

1 Signs and symbols



This symbol indicates tips for the user and other useful information.

2 Product information

for F 80-LR with article No. 207600 and F 160-LR with article No. 207601

2.1 Manufacturer's data

MAFELL AG, Beffendorfer Straße 4, D-78727 Oberndorf / Neckar, Phone +49 (0)7423/812-0, Fax +49 (0)7423/812-218, e-mail: mafell@mafell.de

2.2 Scope of supply

Dowel drilling template complete with:

- 1 dowel drilling template F 80-LR or F 160-LR
- 1 socket head wrench 2.5 mm
- 1 quick reference guide

3 Drilling a series of holes with 32 mm centre to centre distance (Fig. 1 and 2)



A row of 32 mm holes can only be made in conjunction with the following Mafell articles:

- Router LO 55 (Article No. 91A901, 91A920, 91A921) or Router LO 65 Ec (Article No. 91C701, 91C720, 91C721, 91C750, 91C751)
- Milling adapter LO-FA (Article No. 207200)
- Dowel drilling template F 80-LR (Article No. 207600) or F 160-LR (Article No. 207601)



Additional note on router LO 55:

First deactivate the permanent column clamping with the socket head wrench 2.5 mm included in the scope of supply (see also operating manual LO 55, Chapter 6.4.1).

- Place dowel drilling template (F 80-LR or F 160-LR) on the work piece.
- Connect milling cutter adapter LO-FA with the machine.
- Position the machine so that it rests on the guide rail at the side of the splinter guard.
- Pull the compass pin (a) on the router adapter LO-FA upwards.
- Move the machine with the router adapter LO-FA on the guide rail, releasing the compass pin at the same time.
- The compass pin automatically engages in the row of holes on the guide rail (b).
- The hole can be drilled.
- Repeat the procedure.



The compass pin (a) can be put in parking position. To do so, pull the compass pin upwards, turn it parallel to the base body of the router adapter LO-FA and release it again.

4 Use of the dowel drilling template fence (Fig. 3)

- Slide the dowel drilling template fence into the guide rail.
- Turn the compass pin (a) to unlock.
- The compass pin automatically engages in the row of holes on the guide rail. The distance between the edge of the workpiece/first drilled hole is 9.5 mm (centred for a 19 mm-side).

Français

1 Explication des pictogrammes



Ce symbole signale la présence de suggestions pour l'utilisation et autres informations utiles.

2 Données caractéristiques

pour F 80-LR n° d'article 207600 et F 160-LR n° d'article 207601

2.1 Identification du constructeur

MAFELL AG, Beffendorfer Strasse 4, D-78727 Oberndorf / Neckar, Téléphone +49 (0)7423/812-0, Fax +49 (0)7423/812- 218, e-mail mafell@mafell.de

2.2 Équipement standard

Rail à trous complet avec :

1 rail à trous F 80-LR ou F 160-LR

1 clé Allen de 2,5 mm

1 guide rapide